

PHILIPS

VoiceTracer

公网智慧语音终端

VTR1010



使用手册 User manual

欢迎

欢迎来到飞利浦世界！您能选择和购买飞利浦的产品，我们非常高兴。您可以在我们的官方网站上获得飞利浦公司的全方位技术支持，如：使用手册、软件下载、保修信息等。

www.philips.com

产品特点

- 支持电信、移动和联通三大运营商网络。
- 智慧管理平台。
- 全国对讲，不限制距离。
- 支持群呼、组呼和单呼。
- 强劲续航。
- 智能降噪。

安全信息

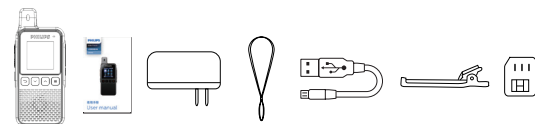
在使用和操作设备前，为确保设备性能最佳，并避免出现危险或非法情况，请遵循各项电气安全规定和适用的法律。

注意

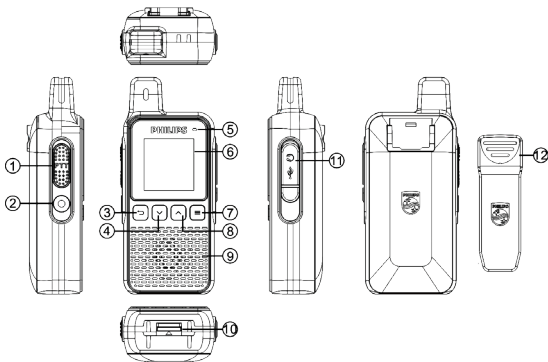
- SIM卡在本机对应卡槽激活后将会被锁定，切勿更换SIM卡槽。
- 第一次使用时请检查外观完整无破损，如果发现电量不足，请使用正规渠道购买的5V/1A 5V/1.5A 5V/2A规格充电器进行充电，请勿边充电边使用本设备。

您的设备

设备包含



主机预览



- ① PTT键:按住发送语音
- ② 对讲录音开关
- ③ 返回键/锁键/解锁键
- ④ 向下键
- ⑤ 工作指示灯
- ⑥ 屏幕
- ⑦ 确认/菜单键
- ⑧ 向上键
- ⑨ 喇叭
- ⑩ 电池盖拨动开关
- ⑪ 写码端口/耳机/充电口
- ⑫ 背夹

常用功能

开/关机

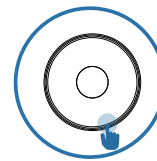
关机状态下，长按菜单键2~3秒，本机自动开机，开启后进入预览界面。

开机状态解锁模式下，长按菜单键2~3秒，本机自动关机。



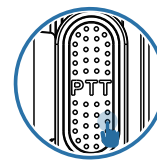
对讲录音

登录账号后，在主界面长按录音键打开对讲录音开关，界面左上角出现录音图标，长按录音键关闭对讲录音。



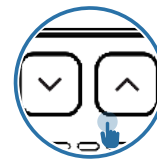
对讲

登录账号后，按下PTT按键开启对讲功能，实时发送语音。



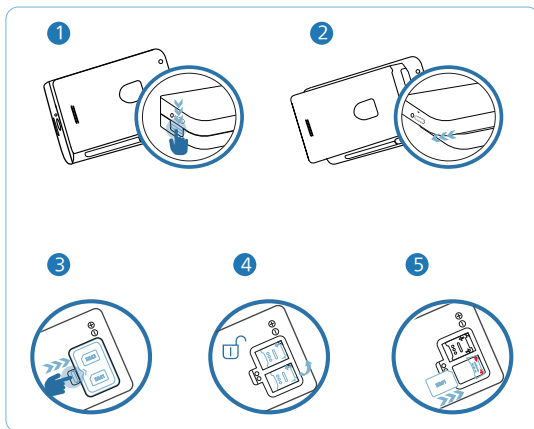
音量调节

在主界面，短按上下键调整音量大小。



电池盖拆卸与SIM卡的安装方式

- 将机器底部的电池盖扣位按箭头指示方向按下后，同时另一只手按住电池盖向后推。
- 取下电池，将SIM卡盖扣子打开，可见两个SIM卡座（任选其中一个，也可以同时插两张卡），将卡座的铁盖向上平推，掀开铁盖，将SIM卡有铜面向下，按方向摆放好，再将铁盖盖下并向下平推扣上。
- 重要提示：SIM卡插入对应卡槽后将会被锁定，切勿随意更换SIM卡槽位。



温馨提示

- 了解更多使用操作，请访问：
<http://www.jwd-dvr.com/service/download.html>

PHILIPS

保修卡

此产品是一件设计精良的高品质数码产品，在正确使用及保养下应能正确地表现其优越性能。
自购买日期始，整机保修一年。关于主要部件保修期限，按照国家消费法规规定执行。公网智慧语音终端中国区总经销（深圳市京华数码科技有限公司）将按下列保用条款持卡用户提供免费保修服务。

保用条例：

保用服务只限于一般正常使用下有效。一切人为损坏，例如接入不当电源，使用不当配件，不依说明书使用，因运输及其他意外而造成之损坏，非经本公司认可之维修和改装，用于商业及工业目的造成产品损坏，错误使用或疏忽而造成损坏，不适当之安装或因天灾造成损坏等，保用服务立刻失效。此保用服务并不包括附件，辅助装置，运输费。维修时请带上此卡及正本发票。

User's Name: 用户姓名	Model No: 型号
Address: 地址	Serial No: 机身编号
Tel.No: 电话	Product Place: 产地
Post Code: 邮编	
Company Seal: 购买商品印章	Shop name and address: 购买商名称及地址
Date of Purchase: 购买日期	Invoice No: 发票号
	Tel.No/Post Code: 电话/邮编

产品服务热线：400 800 7890

© 2022 Speech Processing Solutions GmbH. All rights reserved.

This product has been manufactured by and is sold under the responsibility of Speech Processing Solutions GmbH, and Speech Processing Solutions GmbH is the warrantor in relation to this product.

Specifications are subject to change without notice. Philips and the Philips shield emblem are registered trademarks of Koninklijke Philips N.V. and are used under license.

Document version 1.0, 04/08/22



PHILIPS

VoiceTracer

公网智慧语音终端

VTR1010



使用手册

User manual

Welcome

Welcome to the world of Philips! We are delighted that you choose and buy Philips products. You can have access to full set of technical support on Philips official website, such as user manuals, software downloads, and guarantee information, etc.

www.philips.com

Product Features

- Supports the network of China Telecom, China Mobile and China Unicom.
- Intelligent management platform.
- Nationwide intercom and no distance restrictions.
- Supports group calling and individual calling.
- Strong battery life.
- Intelligent noise reduction.

Safety Information

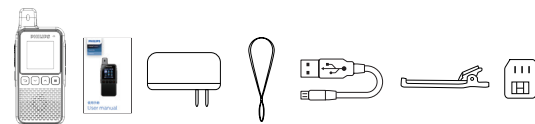
Please abide by all regulations and applicable laws on electric safety when using and operating this equipment in order to ensure the best performance of the equipment and avoid dangers or illegal situations.

Attention

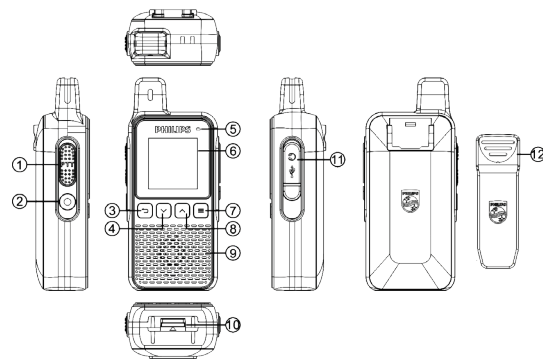
- The SIM card will be locked after being activated on the device and cannot be used on other devices.
- Please check whether the appearance is intact upon the first use. If the power is insufficient, please use the 5V/1A, 5V/1.5A or 5V/2A charger purchased in formal channels. Please do not use the device while charging.

Your Device

What's in the box



Overview



- ① PTT button
- ② Intercom recording button
- ③ Return/Lock/Unlock button
- ④ Down button
- ⑤ Work indicator
- ⑥ Screen display
- ⑦ OK/Menu button
- ⑧ Up button
- ⑨ Speaker
- ⑩ Battery cover toggle switch
- ⑪ Type-c/Earphone interface
- ⑫ Back clip

Commonly used function

Power on/off

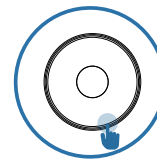
In the state of power-off, long press the Menu button for 2~3 seconds, the device will start automatically, and then enter the preview interface.

Under the unlocking mode in the power-on state, long press the Menu button for 2~3 seconds, the device will automatically shut down.



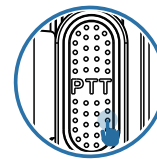
Voice recording

After logging into account, long press the Record button on the main interface to turn on the intercom recording switch, the recording icon will appear in the upper left corner of the interface, long press the record button to turn off the intercom recording.



Intercom

After logging into account, press the PTT button to turn on the intercom function and transmit your voice message in real time.



Volume adjustment

In the main interface, press the up or down keys to adjust the volume.

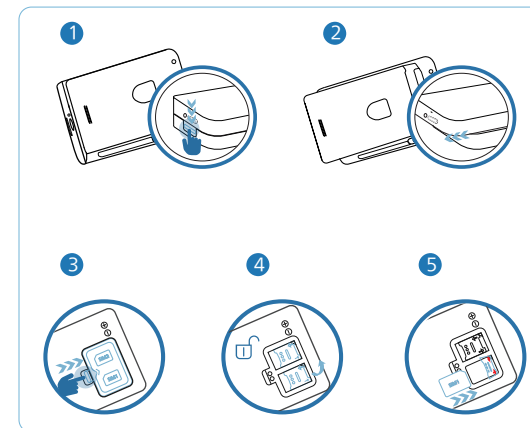


Battery and SIM card installation

• Press the battery holder on the bottom in the direction indicated by the arrow, and at the same time, hold the battery with the other hand and push it backward.

• Remove the battery, open the cover of the SIM card, and you can see two SIM card holders (please insert one or two cards at the same time). Push the iron cover of the card holder upward horizontally, lift the cover, put the copper side of the SIM card downward, and put it in the right direction, and then push the cover down and buckle horizontally.

• Important note: After the SIM card is inserted into the corresponding card slot, it will be locked. Do not change the SIM card slot at will.



Reminder

• To know more about operations, please visit:

<http://www.jwd-dvr.com/service/download.html>

PHILIPS

Warranty Card

This product is made of high quality material and great care has been taken in its manufacture. It is designed to give good performance provided it is properly operated and maintained. The product is sold subject to the understanding that if any defect in manufacture or material shall appear within 12 months, the warranty period is subject to country Consumer Law, Jingwah Digital Service will arrange for such defect to be rectified without change under the following warranty items and conditions.

Warranty Terms and Conditions:

The defect is not due to use of the product for other than domestic purposes, or an incorrect voltage, or use of improper accessories, or contrary to operating instructions, or to accidental damage(whether in transit or otherwise), misuse, neglect or inexpect repair, or incorrect installation, or the product is excessively used for improper purposes other than daily consumption, or accessories belonging to the product, transportation. Present this warranty card and sales invoice when demanding service from Philips authorized service centres.

User's Name: _____
 用户姓名 _____
 Address: _____
 地址 _____
 Tel.No: _____
 电话 _____
 Post Code: _____
 邮编 _____

Model No: _____
 型号 _____
 Serial No: _____
 机身编号 _____
 Product Place: _____
 产地 _____

Company Seal: _____
 购买商品印章 _____
 Date of Purchase: _____ Invoice No: _____
 购买日期 _____ 发票号 _____

Shop name and address: _____
 购买商号名称及地址 _____
 Tel.No/Post Code: _____
 电话/邮编 _____

Product Service Hotline: 400 800 7890



© 2022 Speech Processing Solutions GmbH. All rights reserved.

This product has been manufactured by and is sold under the responsibility of Speech Processing Solutions GmbH, and Speech Processing Solutions GmbH is the warrantor in relation to this product.

Specifications are subject to change without notice. Philips and the Philips shield emblem are registered trademarks of Koninklijke Philips N.V. and are used under license.

Document version 1.0, 04/08/22